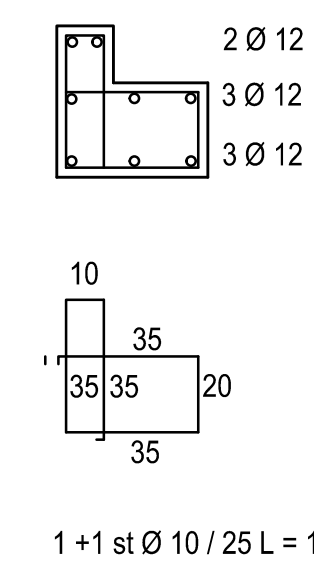
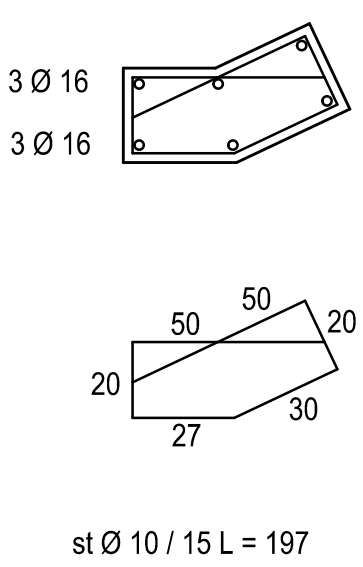


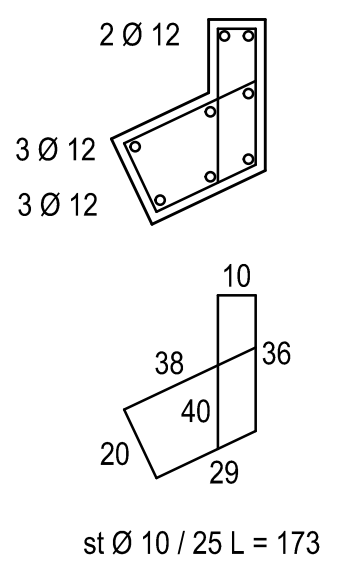
TR A3, A8, A13



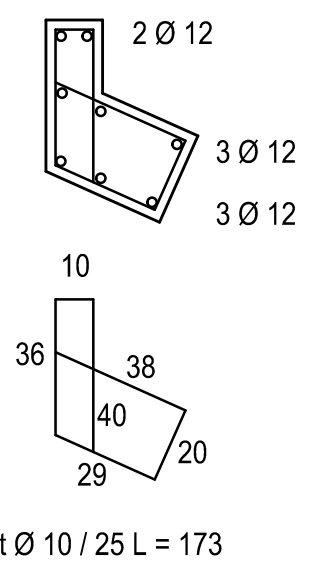
TR A2, A7, A12



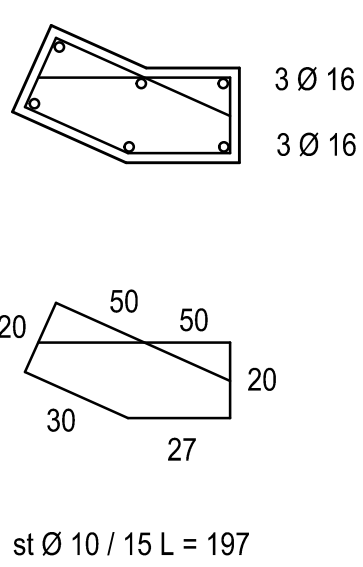
TR A1, A6, A11



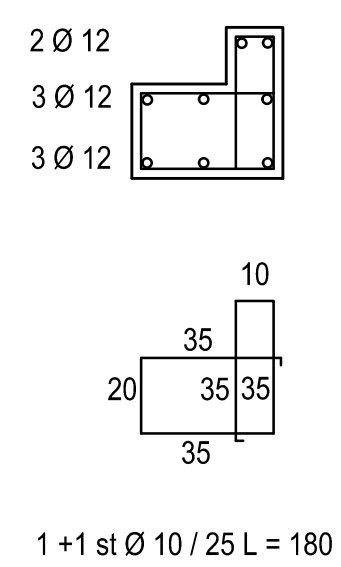
TR A1, A6, A11



TR A2 A7, A12



TR A3, A6, A13



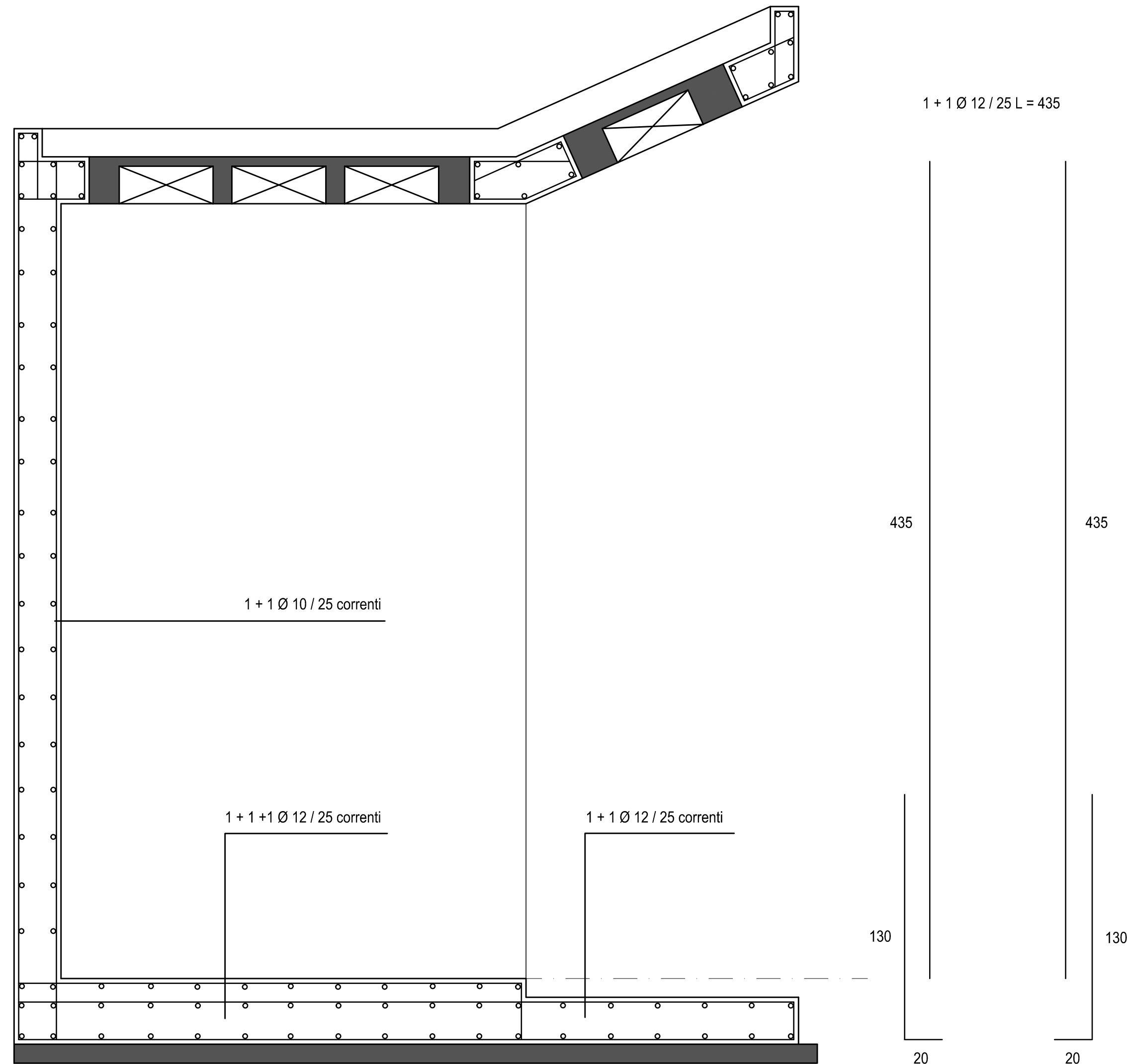
PIANTA FONDAZIONI
PRESCRIZIONI MATERIALI:

CALCESTRUZZO:

C25/30 N/mm²
D_{max} 20-32 mm
classe di consistenza S4
classe di esposizione ambientale XC2
rapporto acqua / cemento MAX 0.60
minimo contenuto di cemento Kg /mc 300
controlli di accettazione tipo A (volumi < 1500 mc)
calcestruzzo a prestazione garantita UNI EN 206-1

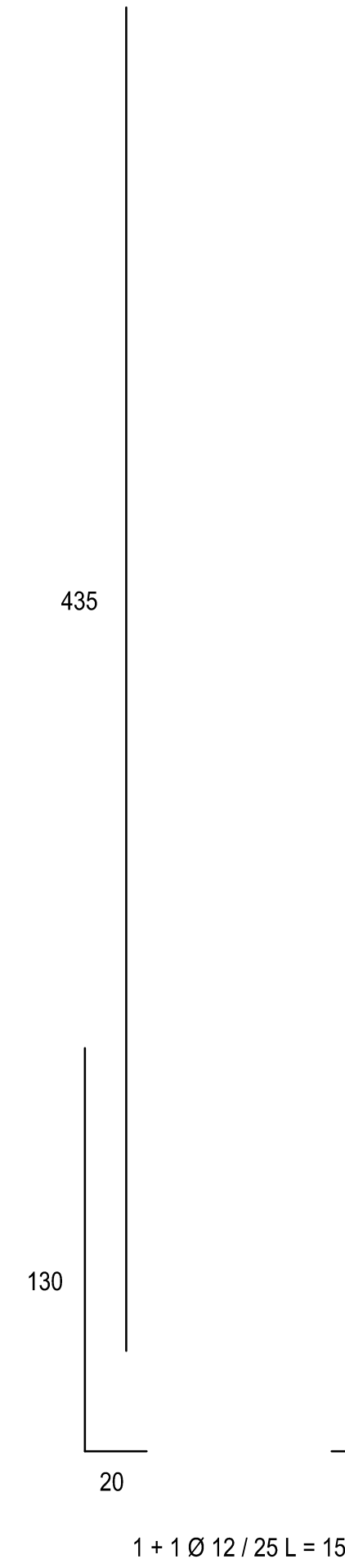
ACCIAIO PER ARMATURA:

ad aderenza migliorata B450C (fyk > 450 N / mmq)

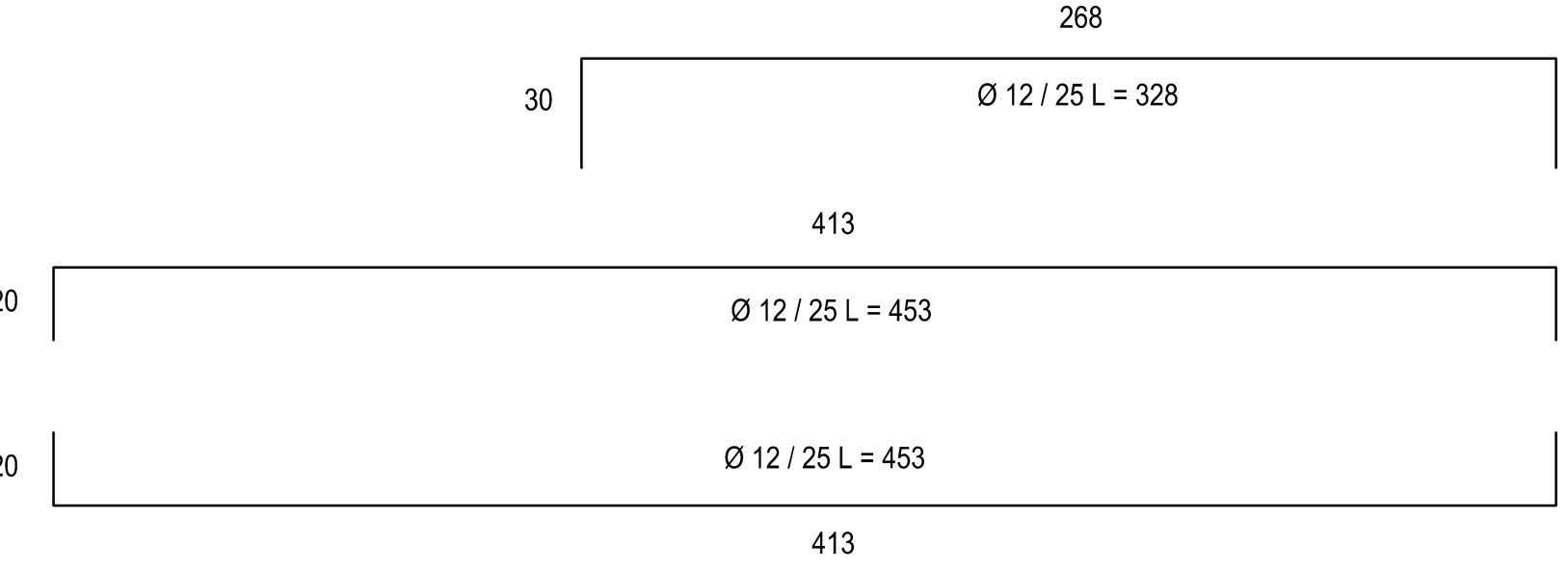
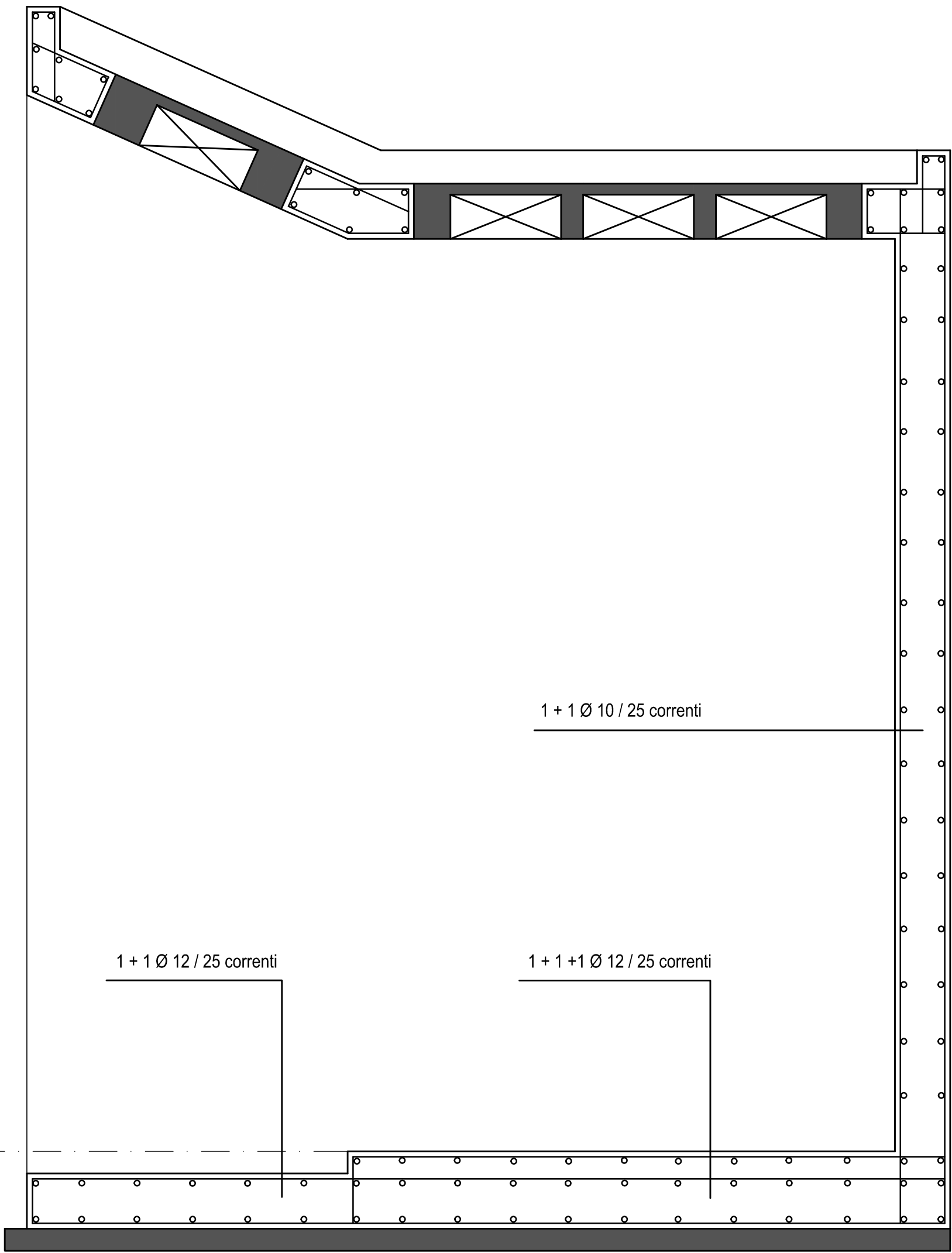


SEZIONE W - W scala 1: 20

1 + 1 Ø 12 / 25 L = 435




SEZIONE X - X scala 1: 20



Provincia di Milano
Comune di RODANO

PROGETTO ESECUTIVO
Nuovo corpo loculi, ossari e cellette cinerarie
presso il cimitero di Lucino

Responsabile Settore Tecnico Architetto MONICA VARALLO			Progettazione Architetto FABIO INGLIMA MODICA via Monti, n. 14 20068 Peschiera Borromeo (MI) www.studioinglima.it	
Scala: 1:50	file: STRU-1.1037	Tav: 04L2-ARM-1	Tavola: Armature sez. X-X, W-W	N°: 4 L2
Data: 19.12.2016	Aggiornamento:	Aggiornamento:	LOTTO 2 STRUTTURE	
 Comune di Rodano			 STUDIO INGLIMA Architettura e consulenza tecnica Architetto INGLIMA MODICA FABIO Via V.Monti n.14 Peschiera Borromeo T: +39.02.38240844 INFO@STUDIOINGLIMA.IT WWW.STUDIOINGLIMA.IT	